

Revision History

Windows Vista, Windows 7, Windows 8, Windows 8.1, Windows 10, Windows Server 2008, Windows Server 2012 and Windows Server 2016 Compatible.

Version 1.55

- **General**
 - Added out of range checks and autocorrection for device configuration parameters.
 - Fixed bug when attempting to load a device firmware version for programming that returned incorrect device type.
- **Silver Network**
 - Support added for the E5000 digital inputs and outputs when used to host the NMS as a NM Controller.
 - Fixed bug when reviewing a prerecorded FP400 plot, Zones 3 and 4 were not being removed from the display when their checkboxes were unchecked.

Version 1.54

- **Silver Network**
 - Resolved bug where Ultralink IO needed an expansion card to enable NM Mode

Version 1.53

- **General**
 - All Language DLLs fixed, broken in 1.52
 - Device History timestamp crash issue resolved, all devices
- **Silver Network**
 - **LM100**
 - Support added to Local Aux Control Activation assignments to separate Sensor Head Fail and Fault assignments into Comm Fail, Comm Warning, Critical Diagnostic and Warning Diagnostic assignments. (Requires MSP V1.14)
 - Added indication to the Local Aux Control Activation assignments of those relays assigned to zones using Segment Relay assignments.
 - Support added for updating Head status display while programming head firmware.
 - Fixed a problem with not recognizing cfg changes did not need to be downloaded prior to a firmware update.
 - **UltraLink I/O**
 - Fixed a problem with .ucm file created that was introduced in V1.43 that blocked reloading of the configuration.
 - **FP400**
 - Small UI tweaks to cable config page

Version 1.52

- **Silver Network**
 - **UltraLink I/O**
 - Disable enabling NM Mode when connected via Network Manager.
 - **X-Field**
 - Fixed mismatch occurring when downloading configuration to sensor when downloaded operating frequencies doesn't match

current active frequency. A separate **Program** button next to operating frequency is used to set the operating frequency.

- **FP400**
 - Added Fringe plot button on the status tab, see help for more details.
 - Numerous changes to cable configuration tab including the addition of Auto-Scale, and Configuration type features.

Version 1.51

- **Silver Network**
 - Senstar FP400
 - Support added for new sensor FP400.
- **Krypton Network**
 - PPD
 - Modified firmware update programming for increased safety with older firmware versions.
 - Added support for new Repeat TX option.
 - Sensor Unit
 - Added support for new Repeat TX option.

Version 1.50

- **Silver Network**
 - LM100
 - Support added for GSM relay activation of on-board relays 9 & 10 and the Optional Aux Output card relays.
 - UltraWave
 - Support added to disable reporting of Transmitter Link Fail diagnostic alarm. Requires MSP V3.05.
 - Support added for Silver (Star) Protocol Speed and Duplex setting. Requires MSP V3.05.
 - UltraLink I/O
 - Support added for Silver (Star) Protocol Speed and Duplex setting. Requires MSP V1.13.

Version 1.49

- **Silver Network**
 - LM100
 - **Normal** Light level control replaced by **Level 1** & **Level 2**.
 - Support added to Aux Input activation of zone lights to select the light level to use. Options are Level 1, Level 2, Alarm Level (including Duration and Mode), or Force Off.
 - Support added to Scheduled activation of zone lights to select the light level to use. Options are Level 1, Level 2, or Force Off.
- On Connect dialog, renamed **TCP/IP** connection selection to **NM** to clarify connection is via a Network Manager and not direct to sensor via TCP/IP.

Version 1.48

- **Silver Network**
 - Simplified Chinese translation of menus and dialogs implemented. Requires UCMCHS.dll file in UCM working directory.
- Added **Record** and **Raw Comm** feature to Status Info dialog.
- Support added for bulk retrieval of device configurations for archiving by Network Manager.

Version 1.47

- **Krypton Network**
 - PPD and Sensor Unit
 - Added support for Alternate frequency and Multiple broadcast options.
- **Silver Network**
 - **FlexZone-4/20/60**
 - Fixed operation of various controls when operated using touch screen.
 - **16I/16O and UltraLink I/O**
 - Fixed config tab tip text for inputs.
 - **LM100**
 - Fixed operation of various controls when operated using touch screen.
 - Fixed operation of mouse click and movement on head configuration graph.

Version 1.46

- **Silver Network**
 - **LM100**
 - German translation implemented.
 - Program Address button disabled when connected via TCP/IP to unit.
 - **FlexZone-4/20/60**
 - Program Address button disabled when connected via TCP/IP to unit.
 - **FlexPS and XField**
 - Fixed a problem with invalid Auxiliary Output points being available for selection on Aux Config tab.
- Fixed a problem with the 60-day runtime limit for Beta versions of the UCM that resulted in the limit also being applied to Release versions of UCM.

Version 1.45

- **Silver Network**
 - Support added for LM100.
 - **NIU**
 - Support added for flexible subnet mask allowing 8-24 Host bits instead of fixed steps of 8, 16 & 24. Requires FPGA V2.03.
 - **UltraLink I/O**
 - Support added for LM100 node type for NM Mode. Requires MSP V1.09.
 - Added Node Side Comm Fail relay assignment for NM Mode. Requires MSP V1.09.
 - Fixed a bug with configuring Output points introduced in version 1.43.
- Implemented a 60-day runtime limit for Beta versions of UCM program.

Version 1.44


- **Silver Network**
 - **UltraLink I/O**
 - Fixed a bug with downloading Input and Output configuration data to the sensor introduced in version 1.43.
 - Fixed problem accessing devices programmed for use with Crossfire network and addressed outside of Silver Network address range.

- Fixed default filename provided for single file plots so it is based on the current time.

Version 1.43

- **Silver Network**
 - **FlexZone-4/20/60**
 - Fixed crash which would occur when trying to update firmware versions from before Gate Module was supported in MSP version 2.20.
 - Support added for "Speed & Duplex" selection of the network connection for Ethernet NIC connections. Requires MSP V2.60.
 - **UltraLink I/O**
 - Support added for Supervised Audio Switch card
 - **16I/16O, FlexPS, OmniTrax and XField**
 - Battery fault diagnostic alarm only reported if Battery Charger enabled.
 - French translation of menus and dialogs implemented. Requires UCMFRA.dll file in UCM working directory.
 - Korean translation of menus and dialogs implemented. Requires UCMKOR.dll file in UCM working directory.
 - Polish translation of menus and dialogs implemented. Requires UCMLPK.dll file in UCM working directory.
 - Plot file and duration settings now saved and used as defaults next time a plot dialog are opened.
- Splash screen added to UCM startup

Version 1.42

- **Silver Network**
 - **FlexZone-4/20/60**
 - Support added for optional Auxiliary 4 Input (p/n 00BA2400) and 4 Output (p/n 00BA2500) cards. Requires MSP firmware version 2.53.
 - Added to the end of exported plot files, peak capture data for the exported records.
 - **OmniTrax**
 - Added peak capture data for the exported records to the end of exported plot files.
 - On the Status tab, added a refresh  button to allow an immediate update of voltage readings for input points. This is in addition to periodic background refreshing that occurs.
- **Krypton Network**
 - **Sensor Unit Gen 1**
 - Added ability to adjust the Reference Tuning for the Receiver on the Config tab. This value should only be modified under the advice of Factory personnel. Requires firmware version 0.39.
 - Fixed a problem where Noise Diag Alarm configuration values were displayed as 0 though internally values in use were saved. If the values were modified the new values were not transferred the Sensor Unit but pre-existing values continued to be used.
- Changed Alarm History saves and Plot export actions to use Unicode file format so that they would work for languages requiring the use of Unicode characters such as Japanese and Russian.
- Fixed an error with saving configurations by UCM when running in Japanese.

Version 1.41

- **Silver Network**
 - Fixed a false configuration mismatch error being reported on download of a configuration for devices with Auxiliary inputs.
- Fixed an incorrect default file extension being used for saved configurations by UCM when running in English.

Version 1.40

- **Silver Network**
 - Japanese translation of FlexPS, FlexZone, NIU, OmniTrax, UltraLink I/O, XField and XField LT screens implemented. Requires UCMJPN.dll file in UCM working directory.
- **Krypton Network**
 - **PPD**
 - Corrected mismatch between UCM and PPD in Protocol selection of Gen 1 and Gen 2 IP Flare protocols.
 - Removed Barometer Fail and Altitude display on Status tab.
 - **Sensor Unit**
 - Removed Altitude display on Status tab.

Version 1.39

- When opening a plot file, the start of the plot is now displayed. Previously end of the plot file was displayed.
- When using the playback controls for stepping to next/previous alarms and events in plots, the located alarm/event is now centered in the plot window.
- **Silver Network**
 - **FlexZone-4/20/60**
 - Added tolerance setting for Gate Sensor Module supervision detection.
 - Local control configuration for Aux Inputs switched to normally open, no resistor.
 - Fixed reversed Local Bypass check boxes for Gate Sensor Module.
 - Added plot playback controls to step between events, to Gate Sensor Module plot. Plot must be recorded with Version 1.39 or later.
 - On Profile dialog, fixed retention of typed working area boundary values (min/max meters and magnitudes) when switching to modifying using up/down arrows or dragging boundaries.
 - **OmniTrax**
 - Cable self tests initiated using local aux inputs which were previously reported in Sensor Alarm History dialog as alarms at meter 481 are now reported as Side A/B Self Test.
 - On Profile dialog, fixed retention of typed working area boundary values (min/max meters and magnitudes) when switching to modifying the boundaries using up/down arrows or by dragging with a mouse.
- **Krypton Network**
 - Support added for 2nd Generation IP Flare Sensor Unit and PPD.

Version 1.38

- **Silver Network**
 - Added **GoTo** button to plot dialogs to enter a date and time to scroll to in a recorded plot.
 - **FlexZone-4/20/60**
 - Added plot playback controls to step between events.

- On SD Card tab, added **Overwrite oldest** option to automatically delete the oldest file on a SD Card when necessary to make room for new recordings.
 - Added Gate Sensor Module information to the printed FlexZone report when relevant.
 - Fixed problem loading Gate Sensor Module Target Serial Number and Filter settings from a configuration (.ucm) file.
- **Krypton Network**
 - Added **GoTo** button to plot dialogs to enter a date and time to scroll to in a recorded plot.

Version 1.37

- **Silver Network**
 - Support added for Gate Sensor Modules. Requires MSP version 2.20 or later.

Version 1.36

- **Silver Network**
 - Support added for rBOX510 digital inputs and outputs when used to host the NMS as a NM Controller.

Version 1.35

Released only as OEM version.

- **Silver Network**
 - Fixed problem with USB communications introduced in V1.34 which caused slower uploading of configurations from sensors.
- **Krypton Network**
 - **Sensor Unit**
 - Fixed a problem with the DAC table becoming corrupted when the operating frequency was changed.

Version 1.34

- Fixed a problem with retaining some custom auxiliary input resistor values. For example a custom value of 4k would change to the standard value 4k7.
- **Silver Network**
 - **OmniTrax**
 - Fixed a problem with loading the Interference Detection Enable flag from a .ucm file
 - **UltraWave**
 - Support added to enable Fast target response. Requires MSP version 3.00 or later.
 - Disabling of Auto Calibration is now an Advanced User class parameter setting.

Version 1.33

- **Silver Network**
 - **FlexZone**
 - Fixed a problem with the incorrect date being displayed in the Sensor Alarm History for MSP version 1.72 or later.
 - Fixed a problem with loading SD card plot files which recorded with FlexZone-4.

- **FlexPS, OmniTrax, XField**
 - Fixed a problem with the changes to the Battery Charger status not being saved unless followed by a configuration download.
- **FlexPS, FlexZone**
 - Fixed a problem with Remote Configuration data not being restored after a firmware update.
- **UltraWave**
 - Support added for Star configuration of Silver Network using a direct TCP/IP connection to each Silver device. Requires UltraWave MSP Version 3.00 or later. Requires NMS version 2.03 or later.
 - Fixed a problem opening program files for updating the sensor firmware.
- **Sennet Network**
 - **Network Controller (NC)**
 - Fixed a problem with the active configuration only being retrieved on initial connection. An upload (either manually or automatically after a configuration download) would not retrieve the active configuration.
 - **Intelli-Flex/Fiber (IF)**
 - Fixed a problem with changing the Local Relay Control setting from the UCM. Workaround was to change the setting using the hardware Intelli-Flex configuration module.
 - Fixed a problem with losing configuration changes when the Relay Time setting was changed

Version 1.32

- Windows XP support discontinued.
- **Silver Network**
 - Support added second generation UltraLink I/O Mode. Fixed UltraLink I/O output assignment for network node alarms replaced by configurable output assignment. Activating of network node control points by UltraLink I/O inputs discontinued. Requires following (or newer) MSP firmware versions:
FlexPS V3.10
FlexZone-4/20/60 V2.03
OmniTrax V2.90
UltraLink I/O V1.04
UltraWave V3.00
XField/XField LT V6.10
 - **FlexZone**
 - Added advanced feature for user to switch between FlexZone-20 and FlexZone-60 operating modes. Using a unit specific authorization code, obtainable from Senstar sales, it is also possible to switch a FlexZone-4 to a FlexZone-60.
 - Fixed problem with device type saved in a FlexZone-60 .ucm file which made it impossible to load the .ucm file.
 - **OmniTrax**
 - Fixed a UCM crash that occurred when on Side A/B Cfig tab the cable configuration plot horizontal slider and scroll bar were both moved to the far right.

Version 1.31

- **New Feature - Krypton Network**
 - Support for Krypton Network devices via USB and TCP/IP to a Network Manager Service. Requires NMS version 2.12 or later.
Krypton devices supported:
 - Sensor Unit
- **Silver Network**

- **FlexZone**
 - Support added for FlexZone-60.
 - Support added for thresholding redesign made in MSP version 1.02.
 - Support added for FlexZone Audio.
 - Support added for fence construction selection on Common Cfig tab. Requires MSP version 1.86 or later.
 - Support added for updating FPGA firmware over the network. Requires FPGA version 1.80 or later.
 - Fixed display of Local Aux Control Activation Zone Alarm assignments on Aux Cfig tab.
 - Fixed display of Alarm History when non-English language selected.
 - Fixed a UCM crash that occurred when on Side A/B Cfig tab the cable configuration plot horizontal slider and scroll bar were both moved to the far right.
 - Fixed the Status tab Event Log reporting an incorrect alarm location when multiple cable alarms occur.
- **OmniTrax**
 - Fixed a problem with the Aux Control and Option Card selection reverting to their default values (Local & None) when a change was made on a Side Cfig Tab.
 - Fixed a problem with selecting Cable Loop supervision for the OmniTrax LT causing a configuration mismatch.
 - Fixed a problem with displaying the clutter when German language was selected.
- **XField LT**
 - Fixed a problem with loading the alarm threshold value from a .ucm file
- **FlexPS & FlexPS SC**
 - Current Battery Charger setting is now restored after programming device if *"Use Current Active configuration after programming unit"* is selected. Previously it reverted to the default state of Battery Charger being enabled.
- Fixed a problem with opening Perimitrax, Panther II, IntelliFlex/Fiber and IntelliField plot files recorded with V1.28. The plot files can be opened with V1.28 but not with V1.29 or V1.30.

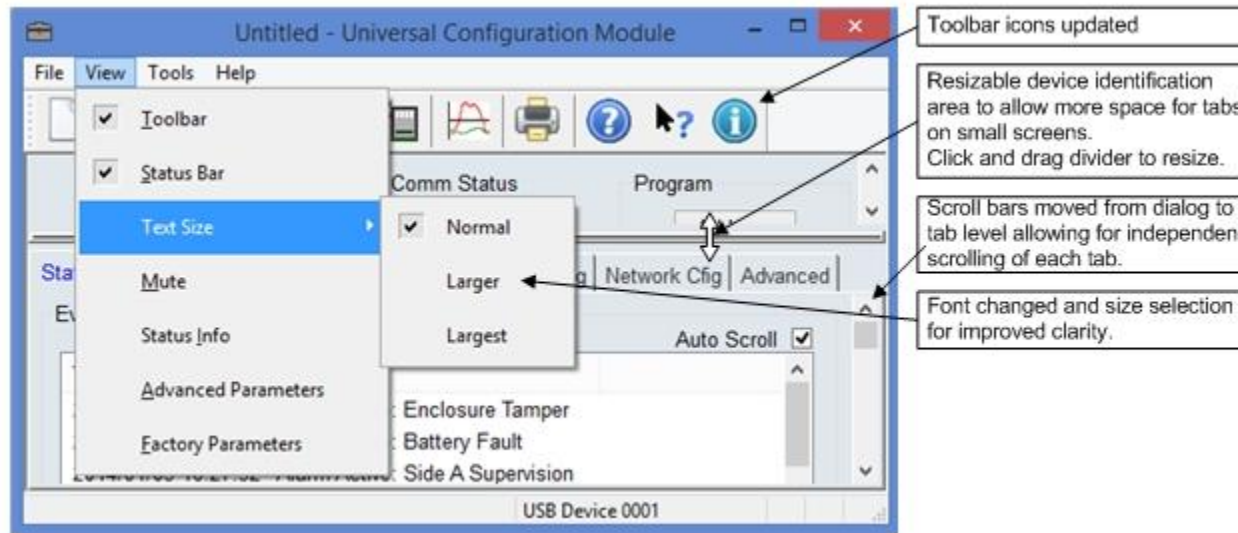
Version 1.30

- **Silver Network**
 - Support added for FlexZone-4 and FlexZone-20.
 - **OmniTrax**
 - Fixed problem with selecting coding for 50% duty cycle on Side B.
 - **UltraWave**
 - Option added to not include Transmitter Status in criteria for Receiver's Local Aux Control activation. Requires MSP version 2.02 or later.
- **Sennet Network**
 - **LTU & TU**
 - Fixed problems with the TU & LTU setting the Filter Window time for inputs.

Version 1.29

- **Windows XP, Windows Vista, Windows 7 & Windows 8 compatible**
 - Touchscreen support under Windows 8.
 - Windows 8 tablet support.

- **User Interface changes for improved functionality**



- **Silver Network**

- Support added for XField LT. Requires XField MSP Version 6.00 and FPGA Version 7.00 or later.
- Support added for FlexPS SC. Requires FlexPS MSP Version 2.60 or later.
- **FlexPS/FlexPI**
 - Support added for NIC fail status. Only applicable for Ethernet NIC card over USB connection.
 - Self test complete after Climb alarm has occurred. Starting with FlexPS MSP version 2.20 a self test only generates a climb alarm.
 - Support added for reporting cable type jumper selection from sensor. Requires MSP version 3.00 and HW version 3.
 - Query added to exit of Calibrate dialog to confirm that any changes made are to be saved.
 - Fixed saving of Power Grid filter setting in .ucm file.

- **OmniTrax**

- Added saving of **RXA<->RXB** .ucm file. Fixes oversight in original support implementation.
- Starting with FPGA version 14.00
 - Disabling a side is handled independent from the Transmitter Power setting. Previously disabling a side was handled by setting the Transmitter Power to 0.
 - Transmitter coding selection has been changed to transmitter active time slot selection.
- Cable configuration split into separate tabs for each side.
- Added **Block Adjust** button to Sensitivity Profile dialog to adjust Profile data for the selected range of meters. Adjustment can be ± 30 dBm.
- Query added to exit of Sensitivity Profile dialog to confirm that any changes made are to be saved.
- Cable Configuration summary on Cable tabs simplified to display just the profile and alarm threshold. Separate cable and segment thresholds are no longer displayed.
- To match the sensor's operation the Magnitude vs Location plot now indicates an alarm (red line) only when the magnitude exceeds the threshold. An alarm is no longer indicated when the magnitude equals the threshold.
- To match NM Plot operation, the Magnitude vs Time plot now plots the peak magnitude from the entire cable length when **Absolute** display mode is selected. When **Relative** display mode is selected,

the peak magnitude from just the active portion of the cable is plotted.

- The profile is automatically adjusted for changes in the Transmitter power (power increased->profile increased, power decreased->profile decreased). In order to support recovery of the profile when a cable is disabled (TX power set to 0) then re-enabled (TX power set to x), it was necessary to assign a virtual TX power level for the disabled cable state.

In previous UCM versions (1.10-1.28) disabling a cable side was treated as adjusting the TX power to -30 dBm for purposes of profile adjustment. In rare cases this would lower the alarm threshold (profile minus margins) below the background noise level resulting in alarms on a supposedly disabled cable side. To stop this occurring, the profile is now adjusted as if the TX power was changed to 12 dBm when a cable is disabled.

Note If a cable side is disabled with UCM Version 1.10-1.28, and enabled with UCM Version 1.29 or later, a manual adjustment to the profile is necessary to recover the original profile. Use the **Block Adjust** function in the Sensitivity Profile dialog to adjust the profile up 42 dBm (Two adjustments will be required; 30 dBm and 12 dBm).

- **UltraLink I/O**
 - Support added for NIC fail status. Only applicable for Ethernet NIC card over USB connection.
- **UltraWave**
 - Support added for diagnostic alarms added to device Sensor Alarm History in MSP version 2.01.
- **XField**
 - Extended the Fast Target Speed Settings lower end to 0.15 m/sec. This is an Advanced user class parameter setting and requires advanced knowledge of XField alarm detection.
 - Added support for Ambient Compensation. Requires XField MSP Version 6.00 and FPGA Version 7.00 or later.
 - Added support for Service Required diagnostic alarms. Requires XField MSP Version 6.00 and FPGA Version 7.00 or later.
 - Field configuration split into three tabs for side specific and common items.
 - Fixed alarm event highlighting of the side label (A/B) on the Sensor Response Plot. The side label highlighted was for the profile preceding the profile with the alarm.
- **TFDIDS**
 - Support discontinued.


Version 1.28

- **New Feature - CCC Network**
 - Support for CCC Network devices via TCP/IP to a Network Manager Service. Requires NMS version 2.03 or later.
CCC devices supported:
 - FOST (Innofence)
 - GPRU
 - SPRU (DTR)
 - VPRU (Barricade)
 - YAEL-16
- **Silver Network**

- Support added for UltraLink I/O.
- **FlexPS**
 - Added support for Power Grid noise rejection Filter. Requires FlexPS MSP Version 2.00 or later.
 - Support added for Star configuration of Silver Network using a direct TCP/IP connection to each Silver device. Requires FlexPS MSP Version 2.10 or later. Requires NMS version 2.03 or later.
- **X-Field**
 - Added support for Individual or Combined Wire Contact detection. Requires XField FPGA Version 6.10 or later.
 - Added support for Alarm Masking of Field alarms after initial alarms. Requires XField MSP Version 5.10 and FPGA Version 6.20 or later.
- Fixed a problem with connecting to a device after first opening a saved configuration for the device. Multiple "The parameter is incorrect." warning pop-ups would appear.
- **Sennet Network**
 - **LTU**
 - Fixed a problem with writing a configuration file which made it incompatible for reloading.
 - **Perimitrax (SM)**
 - Adjusted how Self Test is run to reduce chance of sensor alarm being reported at end of test.
- **Common**
 - Fixed a problem with loading configuration files stored by UCM Versions prior to version 1.22. As a result it would not automatically switch to displaying the correct device type for the file.
 - Fixed a problem running the UCM on computers without any serial ports. It would cause an invalid parameter message and the UCM to crash when connecting to devices over USB.

Version 1.27

Released only as OEM version.

- **Silver Network**
 - If the Device Time varies by more than 30 seconds from the PC time, the adjacent  button flashes indicating an update of the device time is recommended.
 - Explanation added to on-line help for Mark column of plot data exported as .csv or .txt files.
 - **OmniTrax**
 - Function of RXA & RXB cable inputs may now be swapped with the **RXA<->RXB** option on the Cable Common Cfig tab. This reduces the board origin clutter which for some site installations reduces nuisance alarms. Requires FPGA Version 13.02 or later.
 - **XField**
 - Prompt added to confirm setting of default profile values when changing the number wires installed or installation type for a Field side configuration.
 - Prompt added to confirm copying of a configuration between sides for a Field side configuration.
 - Fixed displaying alarm event on plot dialog for profile 6 when displaying raw profile data.
 - Fixed selecting the correct plot records to export when only exporting alarm records.
 - The Mark column of exported plot records now identifies the profile(s) triggering an alarm by 'A' or 'B' side followed by the

profile number. Example "A1A3B2", A side A alarm triggered by profiles 1 & 3 and a side B alarm triggered by profile 2.

- **UltraWave**
 - Fixed a problem where the Locale was not saved in the .ucm file.

Version 1.26

- **Silver Network**
 - In addition to a specific plot duration, an indefinite duration can be selected. The plot will continue to record until manually stopped by the user, or it runs out of storage space.
 - **FlexPS & FlexPI**
 - Horizontal lines have been added to Calibration and Magnitude plots to indicate cut (dotted line) and climb (dashed line) threshold levels.
 - **OmniTrax & OmniTrax LT**
 - Selected Target Speed Setting value now displayed above slider.
 - French translation of OmniTrax screens implemented. Requires UCMFRA.dll file in UCM working directory.
 - **XField**
 - Selected Target Speed Setting value now displayed above slider.
 - Support added for Target Speed Settings of 0.5 and 1 cm/sec. This is an Advanced user class parameters and requires advanced knowledge of XField alarm detection. Requires XField MSP Version 5.00 or later, and FPGA Version 6.03 or later.
 - German translation of X-Field on-line help implemented. Requires UCMDEU.chm file in UCM working directory.
- **Sennet Network**
 - Fixed a problem where an incorrect device type was displayed when browsing for connected devices via the Sennet Network Manager.

Version 1.25

Released only as OEM version.

- Added an **Advanced User** class for qualified technical end users. It provides access to sensor data and parameters for specialized adjustment of the sensor. These parameters are not adjusted for typical installations and require specialized knowledge to adjust. The **Advanced User** class is enabled by installing the UCM with a serial number provided by Senstar customer service.
- **Silver Network**
 - The UCM version used to record a plot is now stored in plot files and is displayed in the plot dialog comment area when reviewing the plot.
 - **OmniTrax LT**
 - Added "Cable loop supervision" option to the selectable Cable Supervision modes.
 - **UltraWave**
 - Fixed a problem loading alarm marks in UltraWave plot files recorded prior to V1.24.
 - Fixed a problem with vertically scrolling the plot when the vertically magnification was used.
 - **XField**
 - Support added for a 6th Event Threshold Profile. Requires XField MSP Version 5.00 or later, and FPGA Version 6.00 or later.
 - Support added for Event inversion. This is an **Advanced User** class parameters and requires advanced knowledge of XField alarm detection. Requires XField MSP Version 5.00 or later, and FPGA Version 6.00 or later.

- Fixed a problem (introduced in version 1.23) with loading the Profile 4 thresholds for X-Field plot recordings made prior to V1.22.

Version 1.24

- **Silver Network**
 - Support added for OmniTrax LT.
 - **FlexPI**
 - Fixed a problem which caused UCM to crash when accessing the FlexPI device in English. Problem didn't occur when the UCM operated in German or Russian.
 - Fixed a problem which wouldn't allowing saving a FlexPI configuration to a file when in switch configuration mode.
 - **FlexPS**
 - FlexPS now supports a Cable Gain setting of 0 for sensitive Mark 2 cable installations.
 - **OmniTrax**
 - Supported added for configuring Local Aux Control Activation. Requires OmniTrax MSP firmware version 2.74 or later.
 - Fixed a problem where an Omnitrac cable with 50 segments configured would cause the UCM to crash.
 - Fixed a problem where adjusting the Omnitrac cable margin using the up/down arrows after changing the cable side being worked on. The starting value was based on the previous side's cable margin not the current side's cable margin.
 - **UltraWave**
 - Event logging of UltraWave Transmitter mismatch alarms now identifies the cause of the mismatch.
 - **XField**
 - Supported added for configuring Local Aux Control Activation. Requires XField MSP firmware version 4.30 or later.
 - Support added for editing the XField Wire Contact Threshold. Requires XField MSP Version 4.30 or later, and FPGA version 5.20 or later.
 - Fixed a problem when exporting XField plot data where alarms were not marked correctly.

Version 1.23

- **Silver Network**
 - Support added for FlexPI processor.
 - Support added for UltraWave microwave sensor.
 - Descriptive text is now displayed when the mouse cursor is placed over the input label on the Aux Cfg tab for inputs being used as Self-Test inputs (Local Aux Control mode).
 - Relaxed timeout requirements to improve communications on USB ports. Some computer USB ports are slower to report back when sending messages resulting in unnecessary resending of messages.
 - If the UCM detects a mismatch between a sensor's current configuration and the previously reported configuration the following message is displayed:

Unexpected differences detected between the UCM's Active configuration and the current configuration of the sensor.

To correct this, download the UCM configuration to the sensor, or upload the sensor's configuration to the UCM.

In addition, the previous configuration is displayed as "Edit" parameters and the "Active" parameters are not accessible until the mismatch is corrected.

- Fixed a problem where an incorrect device type was displayed when browsing for connected devices.

Version 1.22

- **Windows XP, Windows Vista & Windows 7 Compatible**
- **New Feature - Sentrax Network**
 - Support for Sentrax Network devices via TCP/IP to a Sentrax Network Manager.
Sentrax devices supported:
 - CM
 - TM
- **Silver Network**
 - Support added for 60 node network lengths.

Note Requires as a minimum Silver Network Manager version 1.30, and Network Interface Cards (00BA03XX) with firmware version 3.00.

- Support added for FlexPS processor.
- Event log on Status tab now reports Communication, Diagnostic and Contact Closure (auxiliary) alarms in addition to Cable and Field alarms.
- Plot dialogs may now be resized horizontally.
- **OmniTrax**
 - Added Network Connection modes which support synchronizing processors over a 422/FO link between processors.

Note Requires as a minimum FPGA firmware version **12.04** and a revision level **C3** Network Interface Card (00BA03XX).

- Fixed a problem with graphing the segment threshold when the combined cable and segment thresholds resulted in a net negative value.
- Fixed a problem with stepping between alarms during plot playback. The problem would restrict alarm stepping to the first alarm in the recording.
- Russian translation of OmniTrax screens implemented. Requires UCMRUS.dll file in UCM working directory.
- **XField**
 - Support added for a 5th Event Threshold Profile. Requires XField MSP Version 4.20 or later, and FPGA Version 5.10 or later.
- **Crossfire Network**
 - Fixed a problem with the UCM processing unsolicited NM messages for devices other than the currently monitored device. The problem would cause momentary errors on the status tab.
- **VoE Network**
 - Fixed a problem saving IPCC configuration files that resulted in not being able to retrieve the contents when opening.
- **Common**

- When saving device configurations and plots, the default filename is now based on the device type, node address and current date and time. For example, **OTrax_1 20091202_1658**.
- Vertical scrolling using a mouse scroll wheel supported.
- **Installation package**
 - The default location for new installations is now "C:\Senstar\Universal Configuration Module". This change was made to avoid file saving issues involving the Windows Vista/7 User Account Control (UAC) technology access rules for the "C:\Program Files" folder.

Version 1.21

- **Silver Network**
 - Added transmitter duty cycle and coding support for OmniTrax. Feature introduced in OmniTrax FPGA firmware version 12.01.
 - Fixed a problem with OmniTrax profiles not being saved in UCM files.
- **Sennet Network**
 - When connecting to a device, the device type is now confirmed before any additional messages are sent to the device. This protects against the valid messages for one type of device corrupting the configuration of a different type of device.
 - Network Controller
 - The Max Device Number for the Network Controller to poll, is now automatically determined by the last Node number assigned a device.
 - Fixed a problem with exporting Perimitrax and Intelli-Flex/Fiber plot data to comma (.csv) and tab (.txt) files that corrupted the exported magnitude data.
- **Crossfire Network**
 - When connecting to a device, the device type is now confirmed before any additional messages are sent to the device. This protects against the valid messages for one type of device corrupting to the configuration of a different type of device.

Note Checking the device type may not be possible with some Crossfire devices with older versions of firmware. In those cases it is assumed the user selected the correct device type and the UCM proceeds as if the the device type was successfully confirmed.

- Fixed a problem with exporting Intelli-Flex/Fiber and Intelli-Field plot data to comma (.csv) and tab (.txt) files that corrupted the exported magnitude data.
- **German translation re-implemented**
 - German translation of menus and dialogs for sensors using the following connection types: Crossfire, Sennet, Panther & Silver. Requires UCMDEU.dll file in UCM working directory.
- **Installation package**
 - UCM command line options can now be added to the Desktop shortcut as part of the InstallShield installation process.

Version 1.20

- **Windows XP & Vista Compatible**
- **New Feature - Voice over Ethernet (VoE) Network**
 - Support for VoE Network devices via TCP/IP to a VoE Network Manager. VoE devices supported:
 - IPCC

- **Silver Network**
 - XField and OmniTrax plots may now optionally be automatically split into daily files while recording. Filenames are differentiated by inclusion of the date. At a plot rate of 0.2 sec XField and OmniTrax daily generate approximately 16 and 46 Megabytes of data, respectively.
 - Plot files may now be exported based on alarms. In addition to alarm records, up to 10 minutes pre and post alarm data may be exported.
 - Omnitrax checking that the threshold exceeds the minimum threshold now skips inactive segments where the threshold is not applicable.
- **Sennet Network**
 - Fixed default values for Perimitrax Sensor Module auxiliary input Noise Tolerance and Filter Window parameters. Also fixed display and step size problems with Filter Window parameter.
- **Panther**
 - Fixed a communication problem introduced in Version 1.10 which blocked reading configuration and status information from the Panther.
- **CeBus**
 - Specifying an alternative serial number (defaults to the current device's serial number), no longer requires activating Advanced Parameters.
 - Sensor device
 - The Gain and Offset Decoder settings may now be edited when Advanced Parameters is active.
 - RSSI Step Size now has an upper limit of 255 when Advanced Parameters is active. Limit is 30 under normal conditions.

Version 1.10

- **New Feature - Silver Network**
 - Support for Silver Network devices either by direct USB connection or via TCP/IP to Silver Network Manager.
Silver devices supported:
 - Network Interface Unit (NIU)
 - OmniTrax
 - XField
 - MPS-4100
 - 16I/16O
 - TFDIDS

Note NIU only supported via direct USB connection.

- **Sennet Network**
 - Support for Sennet Network devices via TCP/IP to Sennet Network Manager added.
Sennet devices supported:
 - Network Controller (NC)
 - Transponder Unit (TU)
 - Large Transponder Unit (LTU)
 - Perimitrax Sensor Module (SM)
 - Intelli-Flex/Fiber (IF)

Note SM & IF still also supported by direct connection but requires they be disconnected from the NC.

Warning Configuration of NC, TU, LTU and SM auxiliary inputs and outputs is stored by the Network Manager for reloading of devices when they restart. Don't run the Network Manager on a PC that will be removed (e.g. on a laptop) to configure these devices.

- **Crossfire Network**

- Support for Crossfire devices via TCP/IP to Crossfire Network Manager added.

Crossfire devices supported:

- Intelli-Flex/Fiber (IFLX)
- Intelli-Field (IFLD)

Note IFLX & IFLD still also supported by direct connection but requires they be disconnected from the Network Manager.

- **Miscellaneous**

Device dialogs standardized to tabbed format with separate tabs for status and configuration information.

Version 1.04

- **Connection Dialog**

- COM port selection field now displays available ports instead of a static list of ports COM1 - COM9.
- Distinction is now made in the Connection Browse dialog between **Unknown** and **Unsupported** device types.

- **Intelli-FIELD Support**

- Corrected a problem with refreshing the displayed High Pass Filter TC values.

Version 1.03

- **New Feature - On-line Help**

- An on-line help manual is now available for the UCM. Access it by pressing the **F1** key, by selecting **Help/Help Topics** or by selecting the toolbar's **Context Help** button, then clicking somewhere in the UCM windows. Requires UCM.chm file in UCM working directory.

- **New Feature - German translation**

- German translation of menus and dialogs for sensors using the following connection types: Crossfire, Sennet & Panther. Requires UCMDEU.dll file in UCM working directory.

- **Crossfire Network Support**

- Browse for crossfire devices by cycling through all possible addresses, polling for each device in turn and looking for a response. With 128 possible addresses, cycling through all the addresses can take up to 45 seconds if no devices are present but should take less than 5 seconds if all addresses are populated. Fixed an error where the polling cycle was started at address 1 resulting in a device at address 0 (a common starting point for numbering) being checked at the end of the first polling cycle which result in a delay in it being displayed.

- **Intelli-FLEX/FIBER Support**

- Fixed a problem where advanced configuration values were not being transferred to the FILE copy of configuration data when they were saved to a file. A related problem was also fixed which was occurring when

configuration data was loaded from a file; the advanced configuration values were not being transferred to the EDIT copy of the configuration.

- Relay control buttons are disabled in Local Control Mode.
- **Intelli-FIELD Support**
 - Corrected the spin control limits for the Intelli-FIELD Alarm Mask value.
 - Corrected the High Pass Filter TC values on the report printout. The index with the list of valid values was being printed rather than the value.
 - Relay control buttons are disabled in Local Control Mode.
- **Perimitrax Support**
 - Corrected the display of run offset uploaded from the sensor; Negative values were being displayed as numbers >240.
 - Relay control buttons are disabled in Local Control Mode.
- **CEBus Support**
 - When first commissioning a CEBus network, multiple units are often initially connected with the same default address. Functionality of changing transponder addresses in such cases has been improved by allowing users to specify any transponder serial number rather than one at the current connected address. Being able to specify the serial number of a transponder is an advanced parameter option.
 - Default PPD settings changed from 12 bit, 467 Id offset, 0 Low Battery offset to 14 bit, 0 Id offset, 0 Low Battery offset.

Version 1.02

- **New Feature - Passwords**
 - Passwords were added for Downloading Configurations to devices and accessing advanced and factory features. On installation no passwords are configured but may be set using the "Password Maintenance" dialog that is accessed under the Tools Pull-down menu. When a password is defined it is asked for the first time the corresponding feature is accessed. After a valid password is entered it is remembered and not asked for again until the UCM is restarted or the password is changed.
- **Intelli-FLEX/FIBER Support**
 - Added a warning message to plot Record button to notify the user if plotting is not supported due to the Intelli-FLEX firmware version.
- **Intelli-FIELD Support**
 - Fixed a problem with displaying Field Strength status values over 12 Volts, 12.8 was being subtracted from the value that should have been displayed. For example 0.2 Volts was displayed instead of 13.0 Volts.
- **CEBus Support**
 - Support for long serial numbers added to support Kernel version 5.10 which expanded serial numbers to 4 bytes from 2 bytes.

Version 1.01

- **Intelli-FIELD Support**
 - Support was added for High Pass Filter TC half step values between 7 and 12. Valid choices are now 5, 6, 7, 7.5, 8, 8.5, 9, 9.5, 10, 10.5, 11, 11.5, 12, 13 & 14.
 - Fixed problems with storing and reloading combined and common configuration data.
 - Changed the default "Local Aux Control" setting to On.
- **CEBus Support**
 - Signal Gain and Offset parameters changed to Factory level configuration settings
 - Fixed several problems with the handling of alarm messages for Hubs which in some cases caused the UCM to crash.
- **Miscellaneous**

- Fixed a problem with selecting a plot record duration which gave an extremely long duration instead of the one selected.

Version 1.00

Baseline release of UCM with support for:

- **Crossfire**
 - Intelli-FLEX/FIBER
 - Intelli-FIELD
- **Sennet**
 - Perimitrax
 - Intelli-FLEX/FIBER
- **Panther II**
- **CEBus**
 - Hub
 - Relay
 - Sensor
 - MPIU
 - Hub-Sensor