



Intuitive, Powerful Alarm Display and Management

The Senstar Symphony Common Operating Platform includes a full-featured Security Management System (SMS) module optimized for the management and operation of perimeter protection and intrusion detection systems.

With its unified, intuitive interface for security, video, and access control management, the Senstar Symphony Common Operating Platform provides operators with the situational awareness needed to handle everything from daily routines to crisis situations.

STREAMLINED MAP-CENTRIC INTERFACE

Senstar Symphony includes support for configurable maps that display alarms and events from perimeter intrusion detection sensors, access control devices, and third-party equipment.

Perimeter zones can be represented as line overlays on aerial photos or site drawings. If the sensors support ranging, intrusions alarms are displayed at the reported location. Markers indicate previously reported positions, helping the operator determine intruder movements.

LINK SENSOR ALARMS TO CAMERAS AND MAPS

To assist operators in maintaining situational awareness, sensors can be linked with multiple video streams and maps in the Alarm Console. This ensures when an alarm occurs, operators can see the entire security context at a glance.

Features and Benefits

- Unified interface for managing intrusion alarms, surveillance video, and access control devices
- Customizable map-based displays
- Configurable one or two-stage alarm handling
- Alarm aggregation and re-alarm options
- Kiosk-style lockable interface
- Embed web interfaces from third-party systems within main client window
- Right-click on map icons/lines to display device-specific commands and functions
- On-screen operator instructions
- Rules engine for automated actions triggered by sensor states, operator actions, or schedules
- Granular user privileges and access levels
- Built-in support for Senstar perimeter intrusion detection sensors and access control devices
- Scalable, Windows-based architecture
- Sensor status reports
- Multi-language support
- SQL database for configuration and event data
- Full system redundancy option

SENSOR INTEGRATION

The Senstar Symphony Common Operating Platform provides seamless integration with any sensor managed by Senstar's Network Manager software. This includes, but is not limited to, FlexZone®, FiberPatrol®, Senstar LM100, Senstar MultiSensor, OmniTrax®, UltraLink™, UltraWave™, XField®, and the Senstar Alarm Logic Engine. Senstar Symphony works with Senstar sensors out-of-the-box – no integration required.

Senstar Symphony displays all the key information obtained from the sensor. If the sensor supports ranging, for example, the system will display the precise location of alarm events on the map. If part of a sensor goes offline (such as in the case of a fence sensor cable cut), the system visually indicates that the sensor is offline. The real-time state of each sensor and

its components (i.e. each zone, output relay, or auxiliary input) is displayed in the Device Tree.

Senstar Symphony can automatically manage the state of sensor subsystems. For example, it can enable a sensor's output relays as part of the response to an alarm event, or temporarily mask a zone as part of a daily schedule.

ALARM AND EVENT MANAGEMENT

During an alarm event, Senstar Symphony can display on-screen instructions. When closing the event, the system can be set up to require an alarm reason from pre-configured lists. All actions and response times are logged for future analysis. The operator may also document each alarm event with notes. If an alarm is not acknowledged or reset within a configured period of time, the system can automatically re-alarm itself.

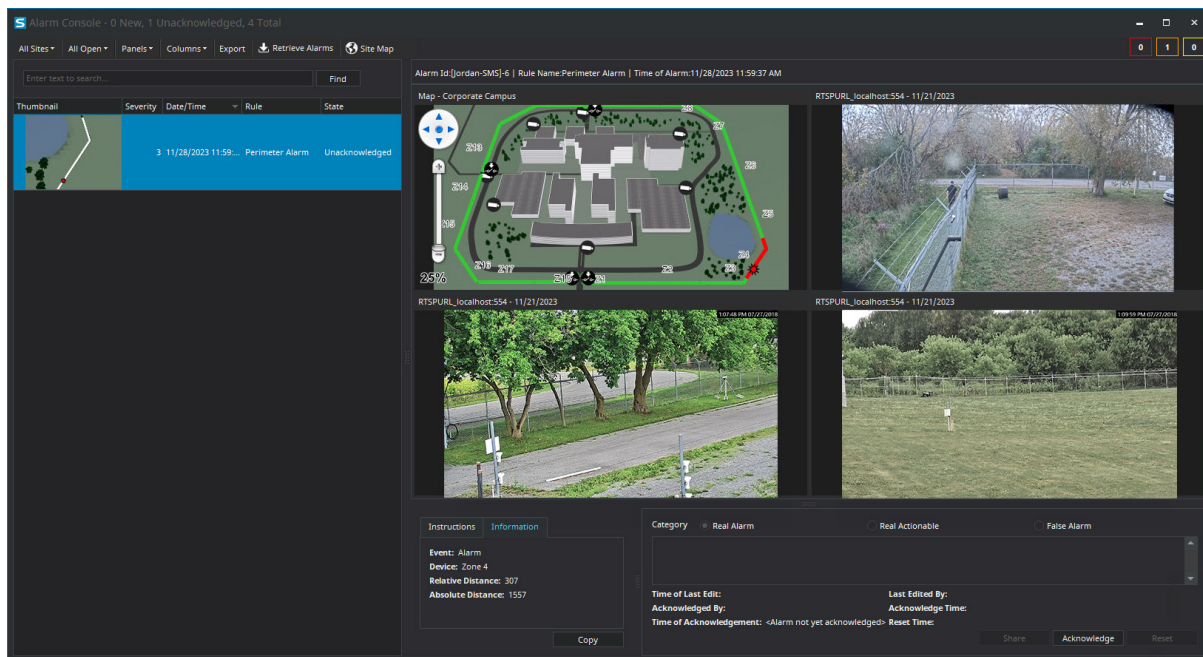
Each sensor or alarm is configurable with a different priority level. Senstar Symphony provides full alarm management, including the ability to acknowledge, close, and temporarily mask alarms. All events are logged and are accessible directly from Senstar Symphony or from third-party reporting mechanisms.

The operator interface is optimized for use on one or multiple monitors, and includes the ability to lock the interface layout against changes or closing the application.

CUSTOMIZABLE FOR YOUR ENVIRONMENT

The Senstar Symphony Common Operating Platform is customizable to the requirements of your site. gurable options include:

- Using the Senstar Alarm Logic Engine to combine multiple discrete sensors into logical units
- Assigning roles and privilege levels to each user (for example, operators, managers, administrators, and view-only workstations)
- Defining event and schedule-based rules to perform specific tasks, such as alarm masking
- Customize maps, alarm notification sounds, and colors.
- Customize map and camera panel layouts.



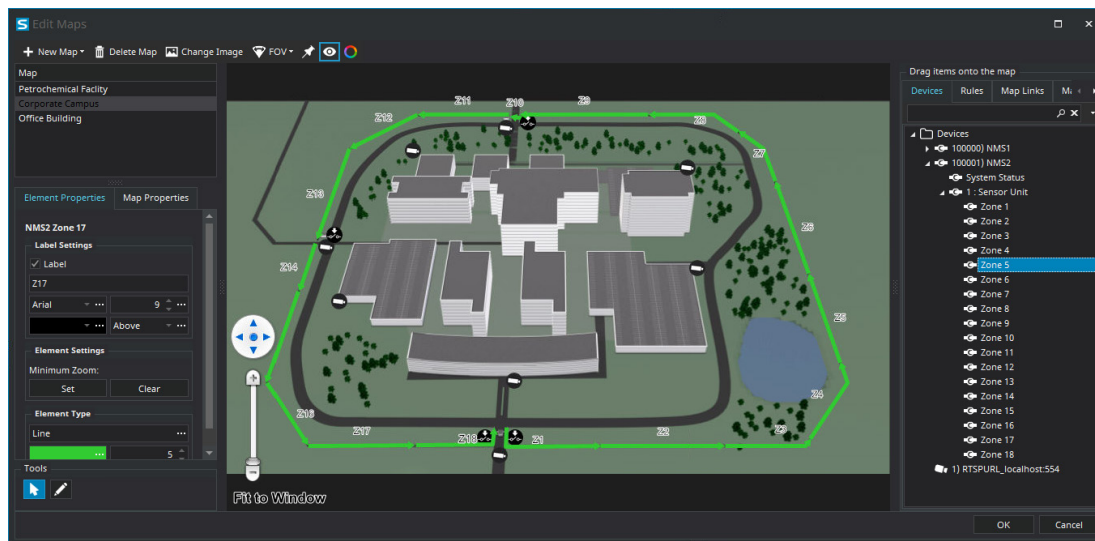
Senstar Symphony Alarm Console

VISUAL SITE CREATION TOOLS

The Senstar Symphony Common Operating Platform enables system administrators to quickly configure their site. Site configuration is a simple, fast process:

- Configure devices, alarms, and schedules from the main web-based configuration interface.
- Select your own images or drawings to use as maps or import those from a GIS system
- Place devices and control points on the maps
- Optimize workflow settings for your site requirements
- Assign rules to generate alarms and perform specific tasks

If new sensors are later added to the site, the system administrator can easily update the operator maps and make the changes.



Map Configuration Interface

OPERATOR FEATURES

- Location of alarm events shown on maps (when used with ranging sensors)
- Graphical, textual, and audible communication of alarms and events
- Customizable alarm sounds (per-rule audio playback options)
- Alarm acknowledge, auto-acknowledge, and reset functionality
- Alarm queuing, sorting and escalation
- Temporary event masking
- On-screen operator instructions
- Per-incident notes
- Link individual alarms to multiple video streams and maps
- Lockable interface with password-protected exit
- On-screen controls to trigger rules and control devices
- Language support: English, German, Arabic, Spanish,

French, Hebrew, Simplified/Tradition Chinese, Japanese, Polish, Swedish, Portuguese, Bulgarian, Greek, Farsi, Croatian, Italian, Dutch, Romanian, Serbian, Thai, and Turkish

ALERTS AND NOTIFICATIONS

- Mobile devices (iOS and Android)
- I/O devices
- Email/SMS notifications, FTP, TCP, SNMP, OPC

ADMINISTRATION FEATURES

- Granular user permissions and roles
- Local and Active Directory-based user authentication
- Import/export site configurations
- Event and user audit logging and reporting
- Standard IT backup management

SENSOR MONITORING AND CONTROL

- Bi-directional communication with all sensors managed by Senstar's Network Manager, including those on Silver, Crossfire, FiberPatrol, and CCC networks
- Rules engine for custom actions based on events or schedule
- Sensor Fusion Engine (license required)
- Alarm Logic Engine
- Manages all sensor control points, including:
 - alarms
 - supervision (wire-cut) alarms
 - equipment diagnostics and fault
 - auxiliary inputs
 - output relays
 - sensor enable/disable

NETWORK FEATURES

- Unlimited number of workstations per server
- Network time synchronization
- Full system redundancy option

SITE CONFIGURATION FEATURES

- Point-and-click sensor placement
- Multi-map support (no programmed limit to number of maps)
- Multi-point line and icon sensor indicators
- Alarm priority levels
- Customizable alarm workflows
- Customizable sensor labels and colors
- Customizable per-rule audio sounds (.wav)
- Map file formats: JPG, PNG, GIF, BMP, TIF, DXF, DWG
- Customizable operator procedures

PART	DESCRIPTION
00FG0220-XXY	Network Manager software on USB key
S8SW3031-XXY	Senstar Symphony V8 Network Manager connection license (1 per NM service)
S8SW3032-XXY	Senstar Symphony V8 FiberPatrol license, 1 required per Sensor Unit
S8SW3033-XXY	Senstar Symphony V8 ranging sensor license (FlexZone, Sentar LM100, OmniTrax), 1 license required per device
S8SW3034-XXY	Senstar Symphony V8 non-ranging sensor license (FiberPatrol FP400, UltraWave, X-Field, UltraLink I/O, Alarm Logic Engine), 1 required per device/software instance

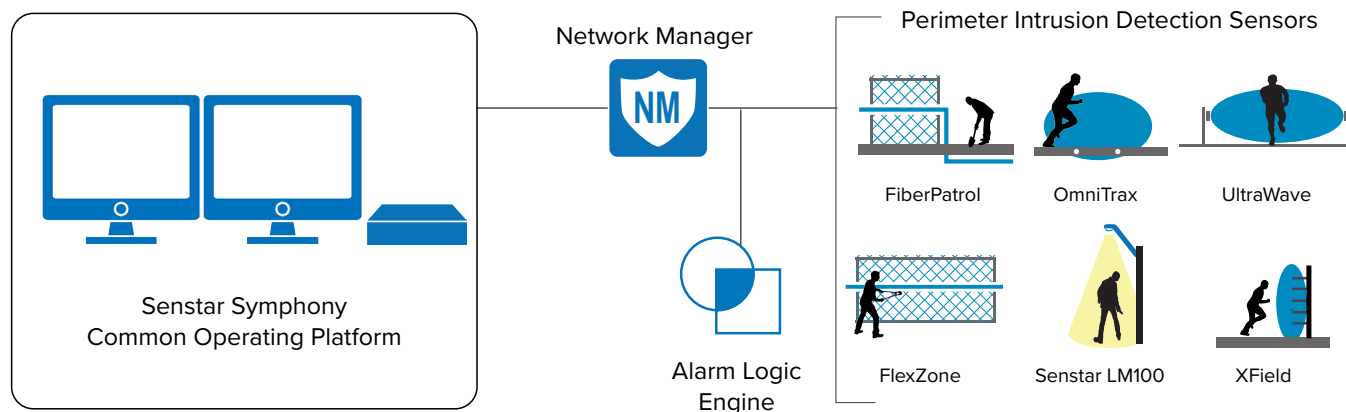
PART	DESCRIPTION
S8SP7001-001	Senstar Symphony PIDS solution includes; one (1) small-form factor fanless computer with Windows 10 Enterprise IoT 2021 LTSC installed and activated
S8SP7002-001	Senstar Symphony PIDS solution, includes; one (1) small-form factor desktop computer with Windows 10 IoT Enterprise 2021 LTSC installed and activated
S8SP7004-001	Senstar Symphony High Availability Solution, includes; Two (2) 1U server computers with Windows Server Standard 2022 and SQL Server 2022 installed and One (1) small-form factor fanless computer with Windows 10 Enterprise IoT 2021 LTSC installed.
S8SP7005-001	Senstar Symphony High Availability Solution, includes; Two (2) 1RU server computers with Windows Server Standard 2022 and SQL Server 2022 installed and One (1) 1RU server computer with Windows Server Standard 2022 installed.

Hardware Deployment Options

The Senstar Symphony Common Operating platform runs on current versions of Windows and is highly scalable, capable of running on single combined server/client PCs and large, fully redundant systems with workstations in different locations.

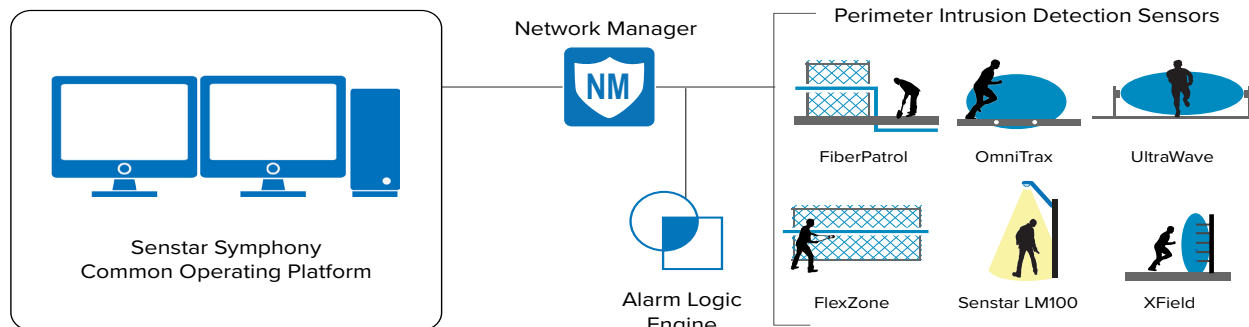
OPTION 1

Small Form Factor, Fanless Computer



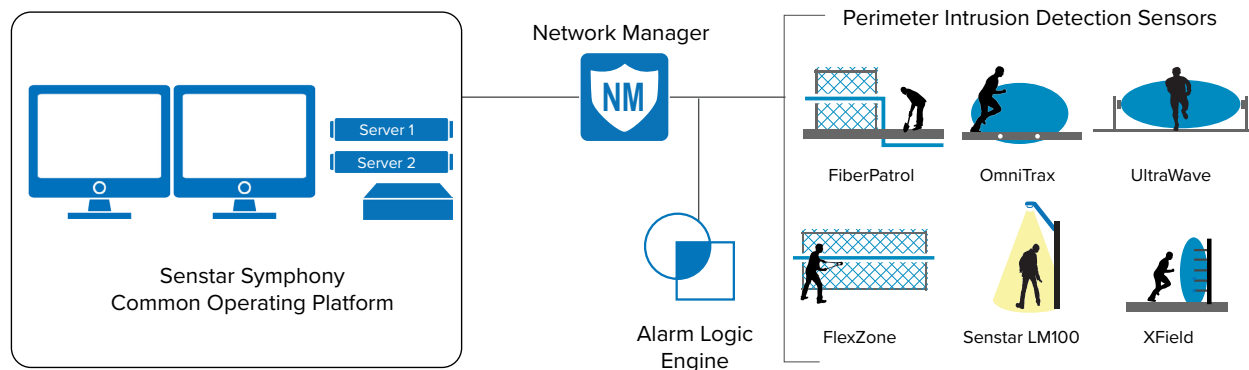
OPTION 2

Small Form Factor, Desktop Computer



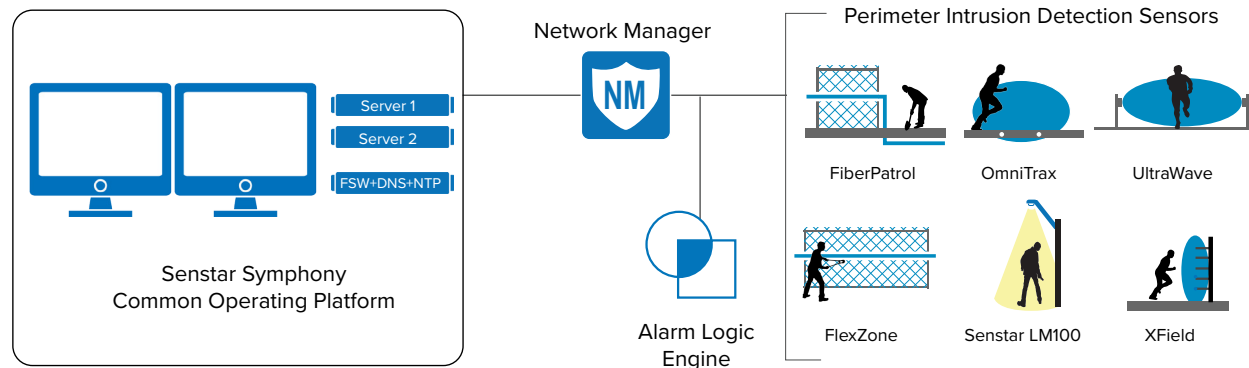
OPTION 3

SQL High Availability with Fanless Witness



OPTION 4

SQL High Availability with DNS, NTP Server Witness



OPTION 1

Small Form Factor, Fanless Computer

Hardware Specifications	
CPU	Intel® 12th Gen Core™ i7-1255U
RAM	16GB
Boot drive	Windows® 10 IoT
OS Storage	1x 256GB SSD
Ethernet	1x 1GE, 1x 2.5GE
Power supply	65W adapter
USB	5x USB-A 3.2
Video output	3x HDMI® 2.0 4K 60Hz
Operating temperature	0°C TO 50°C (32°F to 122°F)
Dimensions (WxHxD)	7.83" (198mm) x 4.68" (119mm) x 1.33" (34mm)
Input voltage	100 V AC to 240 V AC, 50 Hz to 60 Hz
Warranty	Hardware - 3 years

OPTION 2

Small Form Factor, Desktop Computer

Hardware Specifications	
CPU	Intel® Core™ i7-13700
RAM	16GB
Boot drive	Windows 10 IoT Enterprise 2021 LTSC
OS Storage	1x 512 GB SSD
Ethernet	1x 1/2.5GE
Power supply	1x 300W
USB	2x USB-A 2.0, 5x USB-A 3.2, 1x USB-C 3.2
Video output	3x mDP
Operating temperature	5°C to 45°C (41°F to 113°F)
Dimensions (WxHxD)	3.65" (92.6mm) x 11.42" (290.0mm) x 11.53" (292.8mm)
Weight	3.87-5.38kg (8.52-11.86lbs)
Input voltage	100 V AC to 240 V AC, 50 Hz to 60 Hz
Warranty	Hardware - 3 years

OPTION 3

SQL High Availability with Fanless Witness

Hardware Specifications (2 units included)	
Form factor	1U rack mount server
CPU	Intel® Xeon® E-2336
RAM	4x 8GB
Boot drive	Windows® Server 2022 Standard incl. 16C (5 CALs) + SQL Standard 2022 (5 CALs)
OS Storage	2x240 GB M.2 SSD
Storage	2x 480GB
Ethernet	2x 1GB
Power supply	2x 600W
Warranty	Hardware - 3 years

Hardware Specifications (1 unit included)	
CPU	Intel® 12th Gen Core™ i7-1255U
RAM	16GB
Boot drive	Windows® 10 IoT
OS Storage	1x 256GB SSD
Ethernet	1x 1GE, 1x 2.5GE
Power supply	65W adapter
USB	5x USB-A 3.2
Video output	3x HDMI® 2.0 4K 60Hz
Operating temperature	0°C TO 50°C (32°F to 122°F)
Dimensions (WxHxD)	7.83" (198mm) x 4.68" (119mm) x 1.33" (34mm)
Input voltage	100 V AC to 240 V AC, 50 Hz to 60 Hz
Warranty	Hardware - 3 years

OPTION 4

SQL High Availability with DNS, NTP Server Witness

Hardware Specifications (2 units included)	
Form factor	1U rack mount server
CPU	Intel® Xeon® E-2336
RAM	4x 8GB
Boot drive	Windows® Server 2022 Standard incl. 16C (5 CALs) + SQL Standard 2022 (5 CALs)
OS Storage	2x240 GB M.2 SSD
Storage	2x 480GB
Ethernet	2x 1GB
Power supply	2x 600W
Warranty	Hardware - 3 years

Hardware Specifications (1 unit included)	
Form factor	1U rack mount server
CPU	Intel® Xeon® E-2336 Processor
RAM	4x 8GB
Boot drive	Windows® Server 2022 Standard incl. 16C (5 CALs)
OS Storage	2x240 GB M.2 SSD
Storage	2x 480GB
Ethernet	2x 1GB
Power supply	2x 600W
Warranty	Hardware - 3 years