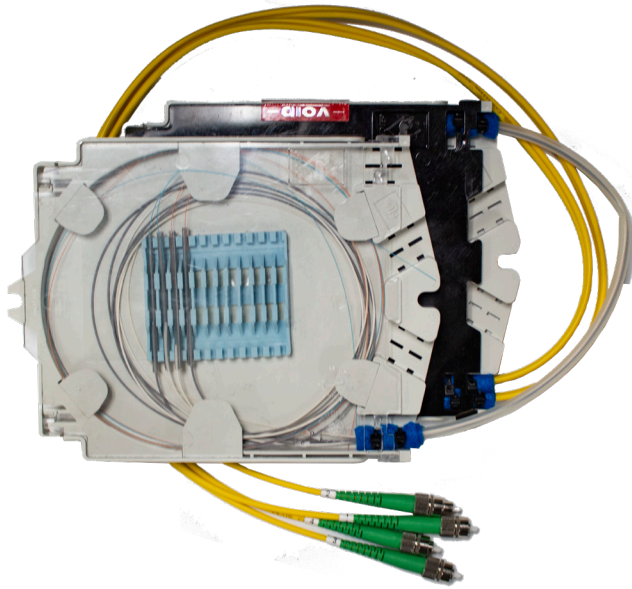


FiberPatrol® Dual Start Module

FPMA0221



The dual start module is used at the start of the fiber optic sensor. It holds up to 12 single fiber splices. The dual start module fits inside the 1U splice enclosure.

Specifications

- Houses dual start modules in sealed splice tray
- Field splices made in user-accessible splice tray (12 splice capacity)
- Weight: 293 g (0.65 lbs)
- Size (L/W/H): 17.5 x 14.0 x 1.1 cm (6.875 x 5.5 x 0.44 in)
- Operating temperature: -40 to 70 °C (-40 to 158 °F)
- Holds up to 12 single fiber fusion or mechanical splices
- Elastomeric splice blocks
- Hinged transparent cover
- Compatible with outdoor splice enclosures GM0749-24 and GM0749-48
- Part numbers:
 - FPMA0221 – For use with FP1100X

