

Benefits of Upgrading to Senstar Symphony™ 8

SENSTAR®



With the award-winning version 8, Senstar Symphony transforms from a full-featured VMS to a Common Operating Platform capable of managing a wide range of security, site management and data intelligence needs. A modular solution which allows you to enable the functionality you need, Senstar Symphony features industry-leading video management, security management, access control, and data intelligence modules, all of which work together under a streamlined, unified interface.

Security management

New physical security features turn Senstar Symphony 8 into a full-fledged Security Management System (SMS):

- Graphical display of security sensors and intrusion locations
- Current device status shown on map and device tree
- Alarm management:
 - Two-stage alarm management (acknowledge and clear)
 - Mask and temporarily mask individual zones or sensors
 - Custom alarm classification options
- Enhanced graphical maps:
 - Import AutoCAD files (.dwg)
 - Create hyperlinks between maps
 - Adjust background colors and labels
- Trigger actions from map or device tree
- Enhanced rules engine (AND and AND NOT operators, cascading of actions)
- Watch window for events

Video management & analytics

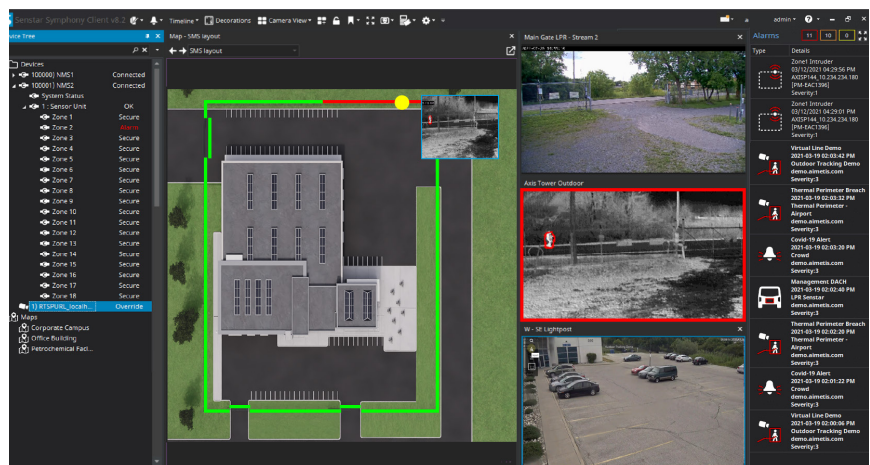
Senstar Symphony 8 enhances video management with the following new or improved features:

- 64-bit architecture (server, clients and video analytics) provides performance improvements
- ONVIF Profiles S & T
- Consolidated timeline improvements
- Associate specific cameras to any security device hardware
- New AI DNN video analytics

Access control

Senstar Symphony 8 further integrates access control functionality into the main Windows client:

- View Card Holder images alongside video streams
- Full access to access control device functions via on-screen controls, graphical map, or device tree
- View status of all AC devices in graphical map or device tree
- Search AC events directly within Senstar Symphony client



Senstar Symphony 8 transforms video management into a full-featured Common Operating Platform

Sensor Fusion Engine

Senstar Symphony 8 supports the new Sensor Fusion Engine, which can defeat nuisance alarms for sites protected video analytics or perimeter intrusion detection sensors:

- Synthesize data from FlexZone intrusion detection sensors and Outdoor People and Vehicle Tracking analytics to generate actionable information
- Not a Boolean integration, system uses low-level data to intelligently characterize security risks
- Improve probability of detection and generate fewer nuisance alarms
- Transparent to end-user (1 alarm)

Cybersecurity and privacy features

To keep your data and systems safe, Senstar Symphony 8 is designed and maintained with cybersecurity in mind:

- Updated .NET and TLS for secure communication
- SQL Server 2019 (and later) support
- Detailed operator audit logs
- Configurable log retention and granular permissions
- Improved privacy features
- Cyber-hardening procedures available

Simplified licensing

With Senstar Symphony 8, the Professional license is no longer supported. Existing Professional licenses are automatically upgraded to Enterprise level, while Standard licenses remain the same. For a list of supported features by license type, see the Senstar Symphony Server and Client Features document.

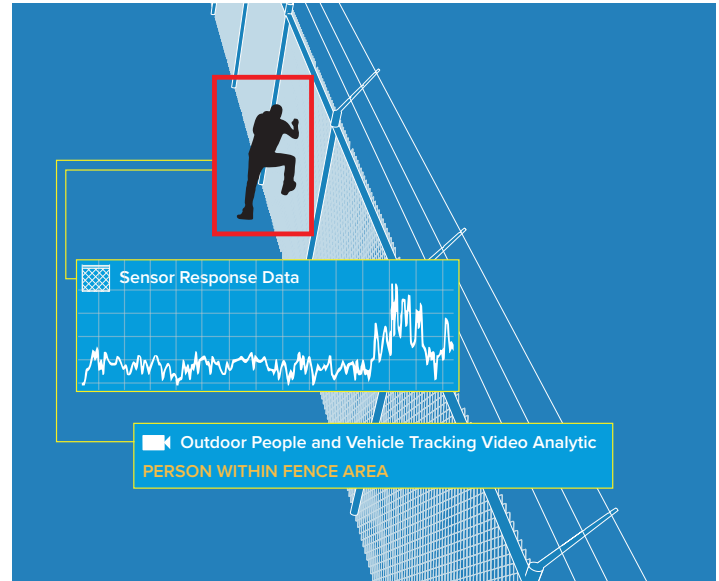
Keep existing cameras and video

Senstar Symphony 8 can work with your existing cameras[†] while the upgrade process is designed to keep your existing video footage along with its metadata. All previously recorded video will remain playable.

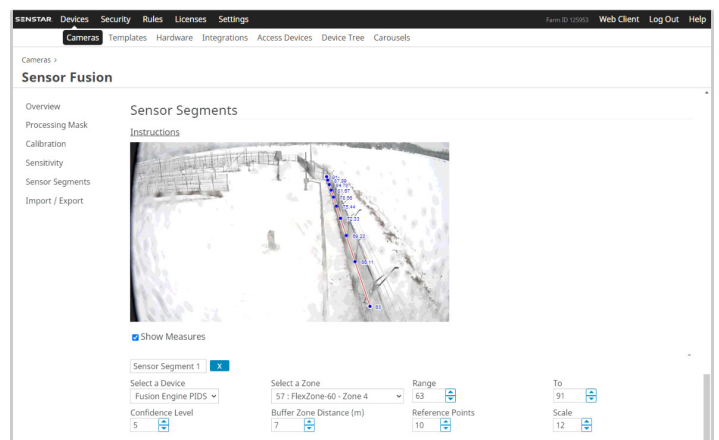
[†] Contact Senstar for camera 64-bit driver availability.

Contact us

If you are running v7, contact us for information on how your organization can benefit from Senstar Symphony 8 as well as to discuss upgrade options. Upgrades for those with active Maintenance and Support contracts are free and fully supported.



The Sensor Fusion Engine intelligently synthesizes low-level data from fence sensors and video analytics to provide the highest possible level of protection while generating fewer nuisance alarms when compared to using just a fence sensor, an outdoor video analytic, or even a boolean logic integration of the two.



Built into Senstar Symphony 8 and available to early adopters, the Sensor Fusion Engine is easy to configure and is completely transparent to the security operator.