

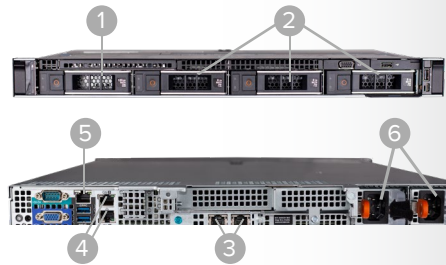
# R1016 Network Video Recorder

High availability NVR for mid-sized projects



## FEATURES AND BENEFITS

- Preloaded with Symphony 7 Standard edition video management software
- Preloaded with versatile Symphony Core Analytics Pack software (R1016-32A)
- Operating System and Symphony application on dedicated solid state drive
- 3x 8TB hot-swappable hard drives in RAID-5 configuration (16TB usable)
- Hot-swappable redundant power supplies
- Support for server-based and embedded video analytics
- Support for a wide range of IP cameras, encoders and IP intercoms
- Windows®, web, iOS and Android operator clients
- Bundled with three years of comprehensive technical services



1. SSD for OS (RAID-1)
2. 3x 8 TB SATA Hot-Plug HDD (RAID-5, 16 TB Usable)
3. 2x 1GbE
4. 2x 1GbE
5. Management Module
6. 2x Redundant Hot-Plug Power Supplies



The R1016 Network Video Recorder (NVR) offers a powerful hardware package configured with enterprise class hardware features and high storage capacity. Preloaded with Symphony™ 7 video management software (VMS), the R1016 is equipped with hot-plug redundant power supplies and 16TB usable recording capacity in a RAID-5 configuration.

Available in two configurations, the R1016 is ideal for customers looking for a validated, turnkey solution with a preloaded open platform VMS that supports a wide range of IP cameras and encoders. A single CPU configuration is optimized for projects requiring basic recording capabilities for up to 48 cameras, while the dual CPU configuration provides additional processing power needed for server-based analytics.

All R-Series recorders include three years of hardware support, including next business day on-site hardware replacement service.

## Ease of installation and extensive support

The R1016 appliance comes preconfigured with all of the necessary software and licensing to minimize installation time. Based on validated hardware components and bundled with three years of comprehensive hardware and software support, the R1016 can be deployed and maintained worry-free.

## Open, fully featured VMS

Symphony 7 is an innovative, open platform for video management, video analytics, system integration and alarm management. Symphony 7 offers a feature-rich, easy-to-use interface and incorporates IT-friendly

features to make administration and remote health monitoring simple and scalable.

## Analytics ready

The R1016-32A dual CPU configuration delivers high performance computing required by server-based analytics applications. Preloaded with four Core Analytics Pack licenses, the system is optimized for a myriad of indoor and outdoor video detection applications out-of-the box. Additional analytics licenses can be added as needed.

## Broad ecosystem support

The R1016's capabilities can be extended through additional products and services. Embedded analytics software is fully supported in addition to the preloaded server-based analytics, enabling a broad range of deployment scenarios. The Thin Client™ offers a secure and convenient video viewing option in space constrained environments. Finally, Enterprise Manager™ provides centralized cloud based monitoring and administration needed in multi-site deployments.

## Increased availability

Redundant, hot-swap components improve NVR uptime. Continuous monitoring of key system elements, performance metrics, and health indicators provides advance notice of potential issues. System events are visible directly in the Symphony Client and optionally available through Enterprise Manager. When required, Senstar will perform remote diagnostics and dispatch a technician to site.

Specifications		
Model	R1016-32	R1016-32A
Form factor	1U rack server	
CPU	Intel® Xeon® Bronze 3104 1.7GHz	2x Intel® Xeon® Silver 4110 2.1GHz
RAM	16 GB	32 GB
Boot drive	SSD with Windows® 10 IoT Enterprise	
Video storage	3x 8TB (16TB usable)	
VMS preloaded	Symphony™ Standard edition	
Base VMS licenses	32*	
Base analytics licenses	n/a	4* core analytics packs
ONVIF	ONVIF Profile S	
Storage subsystem	RAID-5	
Disk type	Hot-plug SATA	
Ethernet	4x 1GbE	
Network protocols	SNMP, SMTP	
Power supply	Redundant hot-plug 550W	
Extended storage	SAN/NAS**	
USB	3	
Operating temp.	10°C To 35°C (50°F To 95°F)	
Dimensions	434.0 x 728.23 x 42.8 mm/17.08 x 28.67 x 1.68 in	
Weight	Maximum weight (with all hard drives/SSDs) 17.5 kg (38.58 lbs)	
Input voltage	50/60 Hz 100–240 V AC, autoranging	
Compliance	CE, FCC, ROHS	
Mounting kit	ReadyRail kit provided	
Warranty	Hardware: 3 years next business day on-site	
Part number	AIM-R1016-32	AIM-R1016-32A

#### Symphony 7 Standard Edition (32 Licenses Included)

Unlimited client connections
Web and mobile clients
2-way audio
Unicast, multicast, & multistream
MJPEG / MPEG-4 / H.264 / H.265
Device pack updates
Record locally or to network storage
Record on schedule, alarm, & continuous
Automatic software updates
Multi-language
Customizable user access level

#### Symphony Core Analytics Pack Contents (4 Licenses Included)

Analytics Engine	Name
VE141	Camera Tampering
VE140	Signal Loss
VE180	Indoor People Tracking
VE180	Outdoor People and Vehicle Tracking
PT091	Auto-Pan Tilt Zoom (PTZ)
VE352	Left Item Detection
VE190	Crowd Detection

#### Technical Services (Three Years, Included)

Access to certified hardware and software experts
Remote system monitoring and diagnostics
Operating system support
Symphony software support
Symphony software upgrades
Cloud-based Symphony configuration backups
Next business day on-site parts and labor response after remote diagnostics

#### Ordering Information

Add-on Software Licenses	Part Number
Symphony Standard edition	AIM-SYM7-S
Symphony Core Analytics Pack	AIM-SYM7-VA-10
Senstar Enterprise Manager	SEM is available as a SaaS subscription on a 1-5 year term
<b>Symphony Edition Upgrades</b>	
Standard to Professional (all preloaded licences)	AIM-R1016-32-SYM7-SP
Standard to Enterprise (all preloaded licences)	AIM-R1016-32-SYM7-SE
<b>Warranty Extensions</b>	
Symphony Standard, 2-Year HW/SW	AIM-R1016-32-SYM7-S-WE
Symphony Professional, 2-Year HW/SW	AIM-R1016-32-SYM7-P-WE
Symphony Enterprise, 2-Year HW/SW	AIM-R1016-32-SYM7-E-WE
<b>Video Analytics Licenses</b>	
Automatic License Plate Recognition (up to 4 cameras)	AIM-SYM7-VA-12
Face Recognition	AIM-SYM7-VA-14
<b>Optional Accessories</b>	
Thin Client™	AIM-A10D
Operator Station	AIM-R001, AIM-R002
8TB Hot-Plug Hard Drive	AIM-R8TB
Dual Port 10GbE NIC	AIM-R10GE

[info@senstar.com](mailto:info@senstar.com) • [senstar.com](http://senstar.com)

