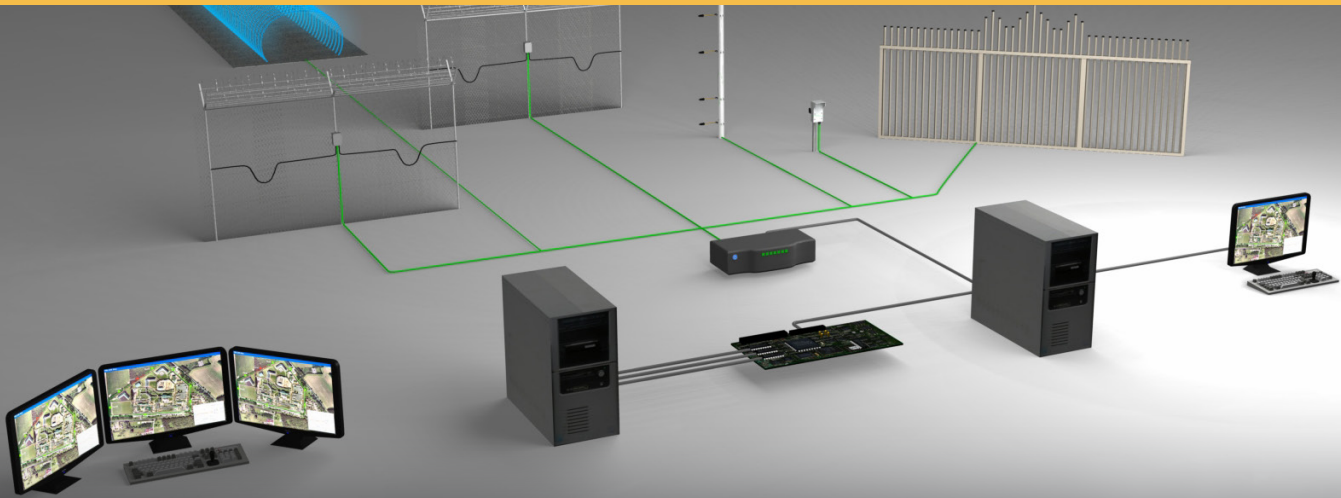


# Integrating Senstar's Network Manager with C·CURE 9000



Senstar® security solutions can be integrated with any security management system that processes text strings received over TCP/IP or serial interfaces as events. For example, consider a scenario where a Senstar perimeter sensor such as FlexZone or OmniTrax detects an intrusion attempt in zone 2 of a site. The Senstar Network Manager software can generate a custom-formatted text string that directs a Video Management System (VMS) to direct cameras to the area or a Security Management System (SMS) to generate an alarm and display the zone on an operator's map.

Text-string output enables the Network Manager to be quickly integrated into many systems, thus avoiding the requirement to use cumbersome relay-based approaches or custom software integrations.

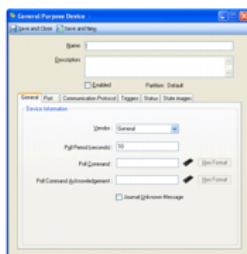
This application note shows how to integrate Senstar products with a site managed with Software House C·CURE 9000 Security and Event Management System by using its General Purpose Interface functionality.

**Note:** At the time of deployment it is recommended to obtain and follow the latest General Purpose Interface documentation.

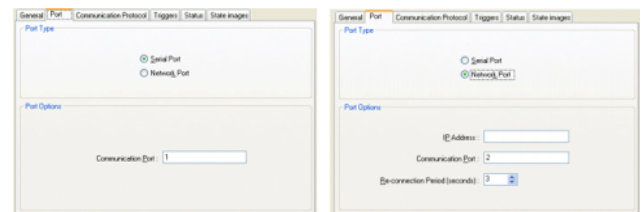
## Step 1. Create a General Purpose Device

First, create a General Purpose Device in C·CURE 9000:

1. Click the **General Purpose Interface** button in the Navigation Pane.
2. Right-click the company folder in which you want to create the device. Click **General Purpose Device** and then select **New**.
3. A new General Purpose Device window appears. To edit the fields, ensure the **Enabled** checkbox is unchecked.



4. For the **Poll Command** enter "AA". For the **Poll Command Acknowledgement** enter "BB".
5. Click the **Port** tab and select either **Network Port** or **Serial Port**.
  - If Serial Port is selected, enter the COM port number.
  - If Network Port is selected, enter the IP address of the Network Manager PC, the port number and re-connection period in seconds. Use the default Network port number, **3001**.

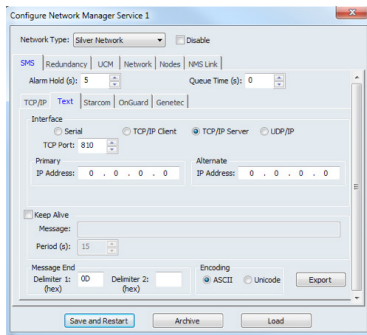


6. After entering the new settings, check the **Enabled** checkbox.
7. Click **Save and Close**.

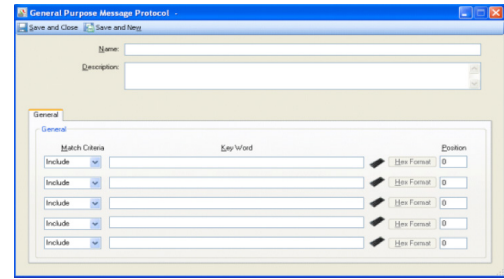
## Step 2. Configure Network Manager

The next step is to configure the settings in Network Manager to enable communication with C-CURE 9000.

1. Open Network Manager Front Panel and click **Configure**.
2. In the Configure window, select the **Text** tab:
3. For the Interface type, select **TCP/IP Server**.
4. Use the IP address of the C-CURE 9000 PC for the Primary IP Address field. Set the TCP Port field to **3001**.
5. Check the **Keep Alive** checkbox. In the Message field, enter "BB".
6. Click **Save and Restart**.



The message protocol editor will appear.

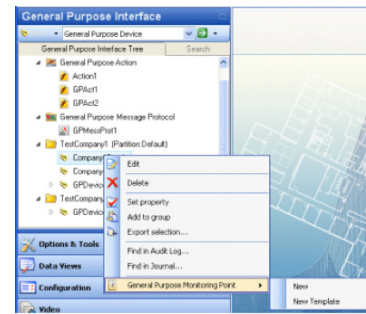
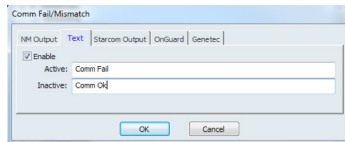
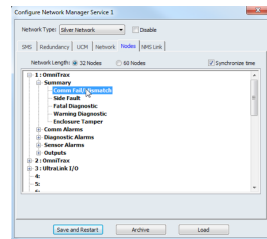


2. In the first Key Word field, enter a Name for the Message Protocol (ie. Comm Fail). Enter the ASCII text you previously entered for the Active alarm in the Network Manager.
3. Click **Save and Close**.
4. Repeat the previous steps for the Inactive Alarm state.
5. Create a Monitoring Point: right-click on the company folder in the tree. Select **General Purpose Monitoring Point** and then select **New**.

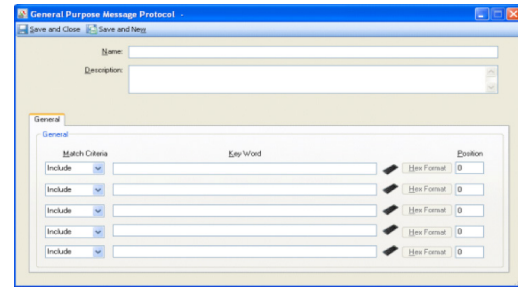
## Step 3. Configure Alarm Messages in Network Manager

To send alarm status states to C-CURE, the ASCII strings must be defined on both the Network Manager side and the C-CURE side. To define the output strings on the Network Manager side that will be sent to C-CURE:

1. Double-click the alarm point to configure.
2. In the Text tab, check the **Enable** checkbox and enter text strings for active and inactive alarm states.
3. Click **OK**.



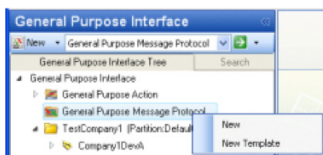
6. The editor window will appear. Enter a name for the monitoring point (i.e. "Comm Status").



## Step 4. Configure Alarm Messages in C-CURE 9000

On the C-CURE side, a General Purpose Message Protocol needs to be created for each Active and Inactive state.

1. In the General Purpose Interface Tree, right-click the **General Purpose Message Protocol** folder and select **New**.



7. For the Activation Message, select the Message Protocol made for the Active Alarm state.
8. Repeat this procedure for the Deactivation Message (browse for the Inactive Alarm state Message Protocol).
9. Select the **Triggers** tab.
10. Add a trigger that generates an event when the Monitoring Point goes active.
11. Click **Save and Close**.

Events will now be activated by alarm points configured on the Network Manager side. The two systems (Network Manager and C-CURE 9000) are now integrated.