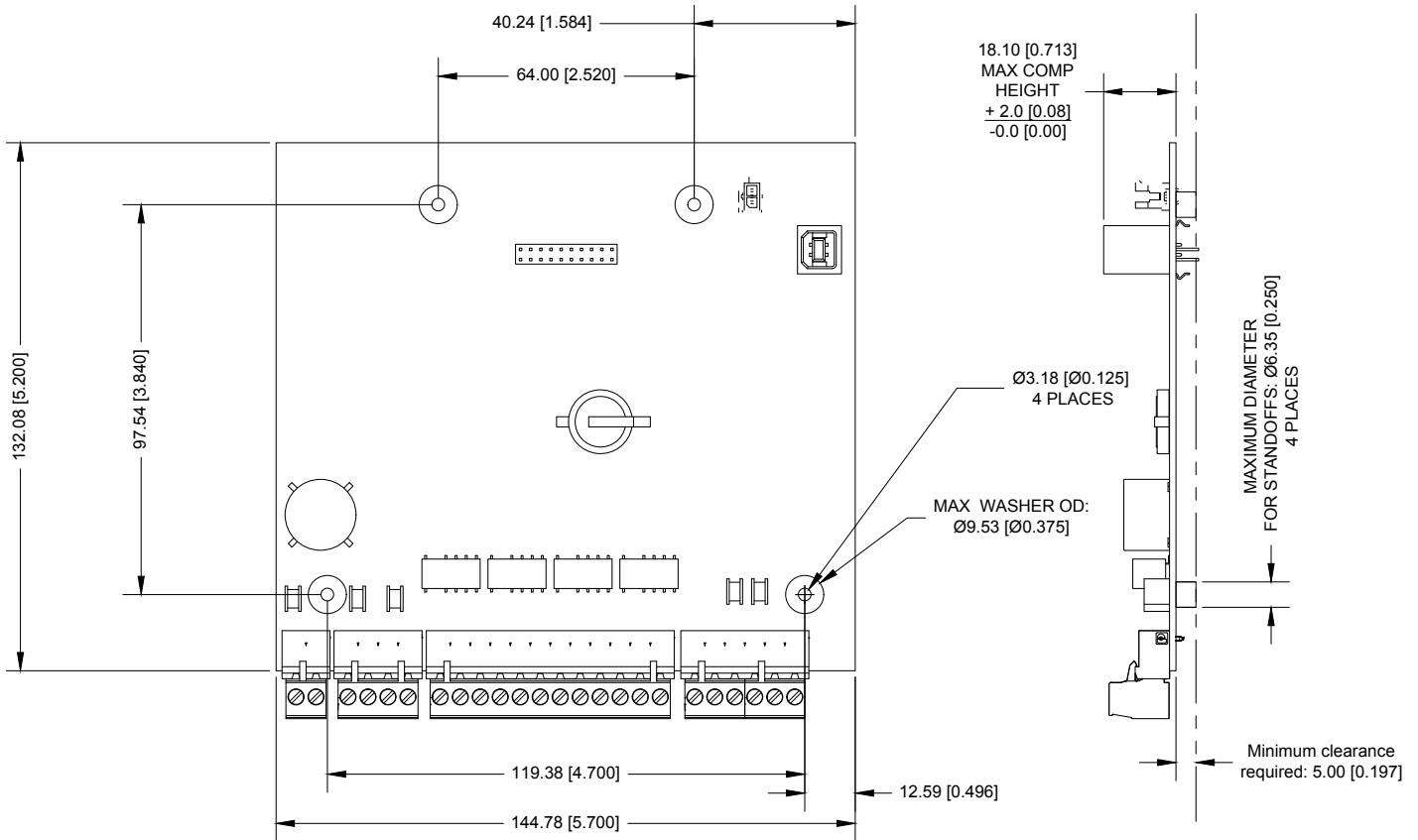


# Senstar LM100 Gateway PCB

E8BA0200-001



**LM100 GATEWAY PCB**  
**SEE PRODUCT GUIDE**  
**E8DA0102-001 FOR SPECIFICATIONS AND INSTALLATION INFORMATION**

**FOR PCB ONLY REPLACEMENTS, ORDER E8FG0500-001**