

Flare RTLS Software

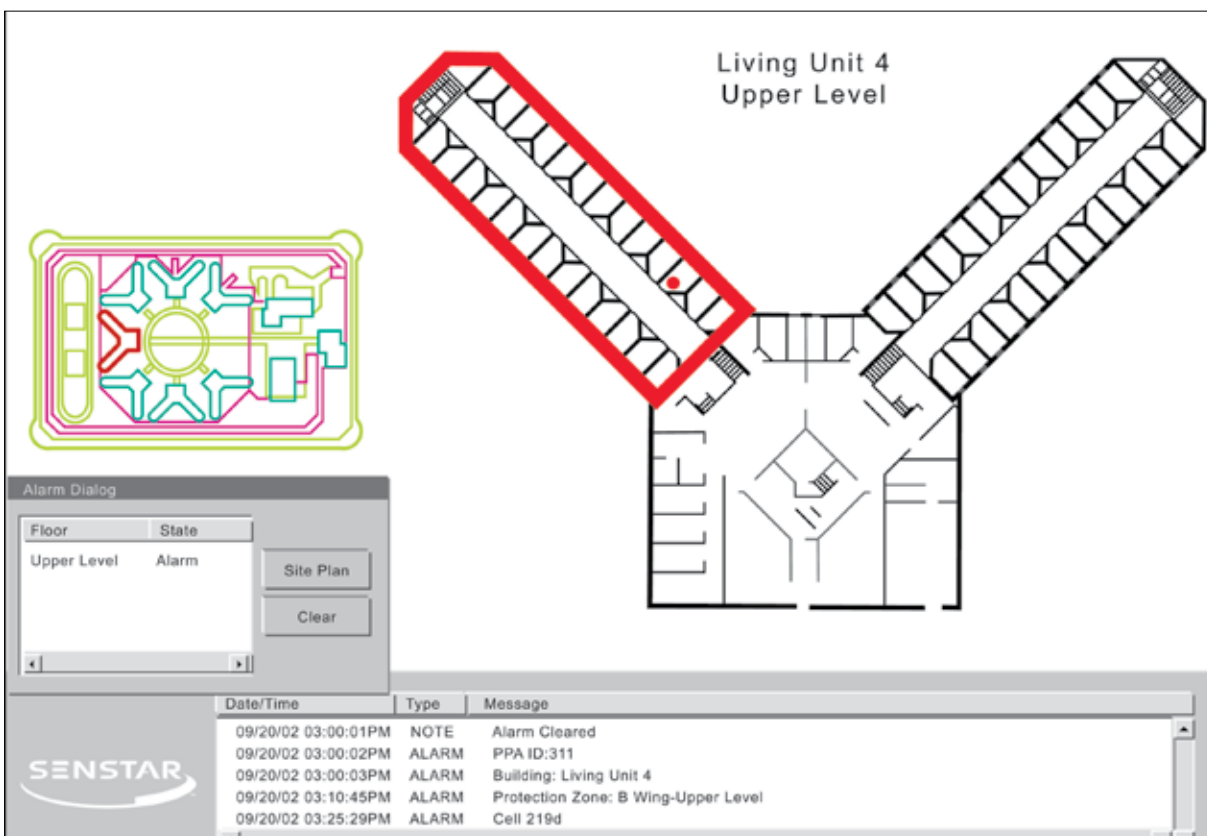
T1SW0400

Description

The Flare Real-Time Locating System (RTLS) is a Windows-based application that analyzes the Received Signal Strength Indicator (RSSI) values of Personal Protection Device (PPD) activation signals received by the sensor unit network. The software uses this information to display the location of the PPD on a facility map.

Minimum Workstation Hardware Requirements

- Operating system: Windows 7 Professional
- Processor: Intel i5
- Hard drive: 320 GB
- Memory: 8 GB
- Network: 10/100 Mbit Ethernet
- Display: 1920x1080 recommended
- Keyboard, mouse, and/or touchscreen



See the Flare Datasheet for a full system description.